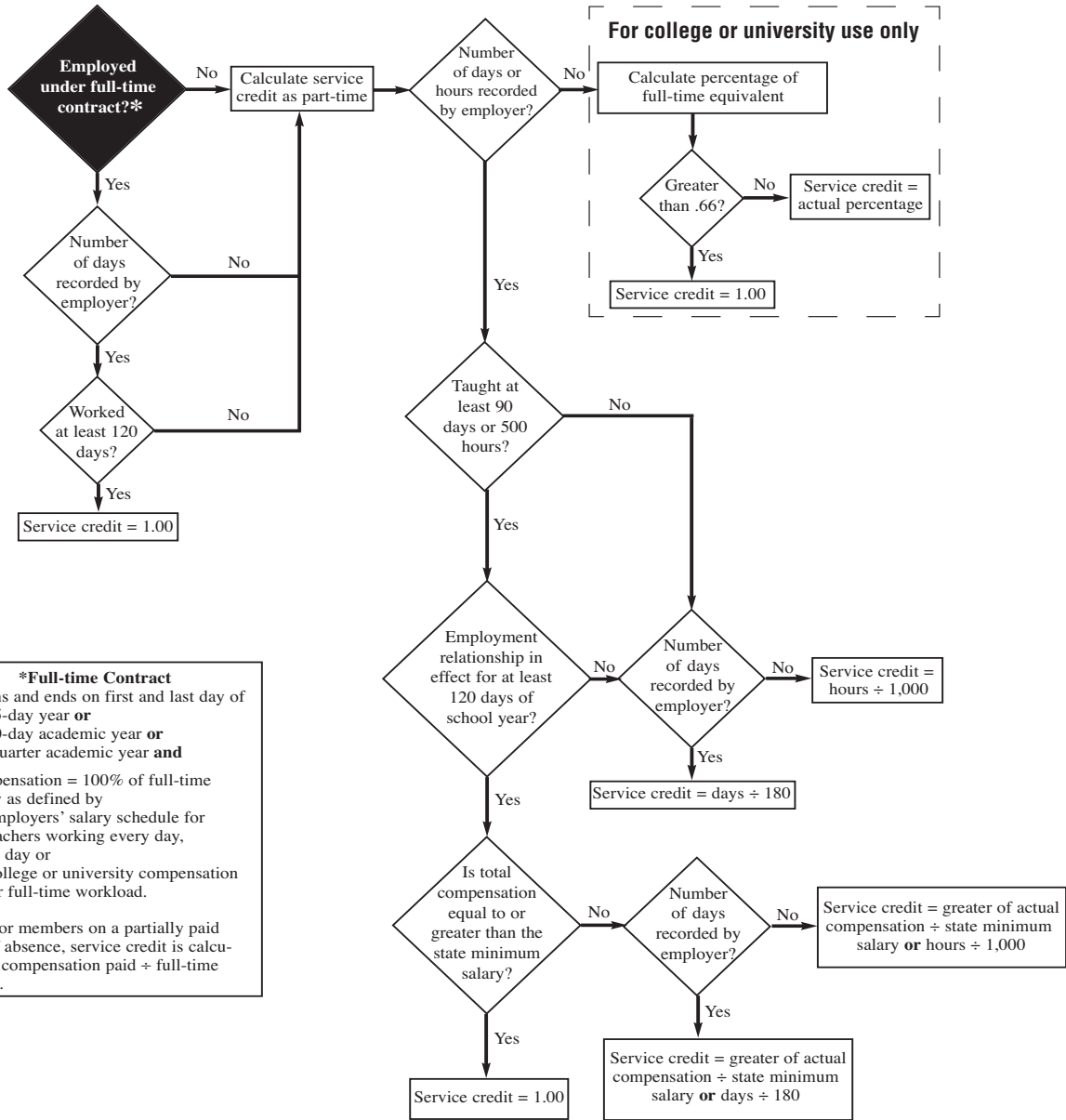


# STRS OHIO SERVICE CREDIT DECISION TREE



**\*Full-time Contract**

1. Begins and ends on first and last day of 365-day year **or** 180-day academic year **or** 3-quarter academic year **and**
2. Compensation = 100% of full-time salary as defined by
  - A. Employers' salary schedule for teachers working every day, all day **or**
  - B. College or university compensation for full-time workload.

**Note:** For members on a partially paid leave of absence, service credit is calculated as compensation paid ÷ full-time contract.

This decision tree is based on State Teachers Retirement Board Rule 3307:1-2-01. It is provided as a tool to assist you in understanding the calculation of service credit. It is not intended to be a comprehensive description of the rule.