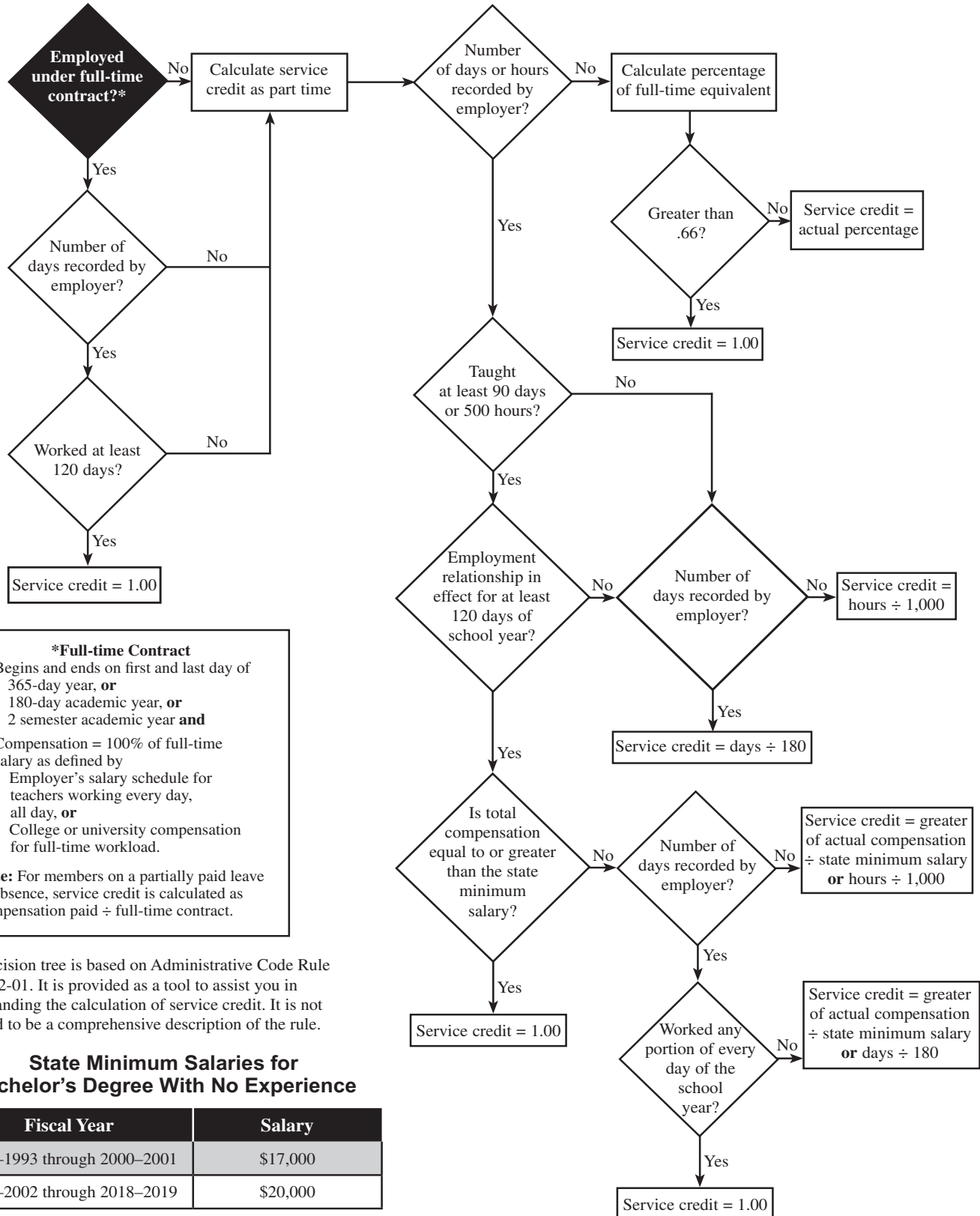




## Service Credit Decision Tree (Effective Jan. 19, 1996, through June 30, 2019)



**\*Full-time Contract**

1. Begins and ends on first and last day of
  - 365-day year, **or**
  - 180-day academic year, **or**
  - 2 semester academic year **and**
2. Compensation = 100% of full-time salary as defined by
  - Employer's salary schedule for teachers working every day, all day, **or**
  - College or university compensation for full-time workload.

**Note:** For members on a partially paid leave of absence, service credit is calculated as compensation paid ÷ full-time contract.

This decision tree is based on Administrative Code Rule 3307:1-2-01. It is provided as a tool to assist you in understanding the calculation of service credit. It is not intended to be a comprehensive description of the rule.

### State Minimum Salaries for Bachelor's Degree With No Experience

Fiscal Year	Salary
1992-1993 through 2000-2001	\$17,000
2001-2002 through 2018-2019	\$20,000

(continued)

## Full-Time vs. Part-Time Service.

	Full Time	Part Time
<b>Contract Length</b>	Covers the entire school year.	Covers only a portion of the school year.
<b>Compensation</b>	<p>100% of the full-time salary defined by salary schedule</p> <p><b>and</b></p> <p>works at least 120 days.</p>	<p>Does not equal the salary schedule for teacher working every day of the school year</p> <p><b>or</b></p> <p>does not meet requirements for full-time employment.</p>

## Calculating Part-Time Service Credit

Employment Status	Days Worked	Days in Employment Relationship	Is Salary Greater Than State Minimum?*	Service Credit Calculation
<b>Part Time</b>	≥ 90	≥120	Yes	1.00
	≥ 90	≥120	No	Greater of: Days ÷ 180 <b>or</b> Total Compensation ÷ State Minimum Salary*
	≥ 90	<120	N/A	Days ÷ 180
	<90	N/A	N/A	Days ÷ 180

\*For a chart of past and current state minimum salaries, please see the Earned Service Credit section of the *Employers Manual* on the STRS Ohio Employer Website.